

The Nunavik Research Centre

40 years of
Inuit-Led Research

Ellen Avard

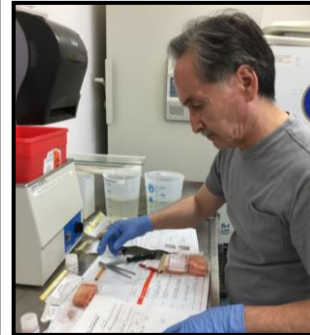
Towards a Roadmap for Coordinated Arctic Observing

ASM2 Side Event - Berlin, Germany

October 24th, 2018

The Nunavik Research Centre (NRC)

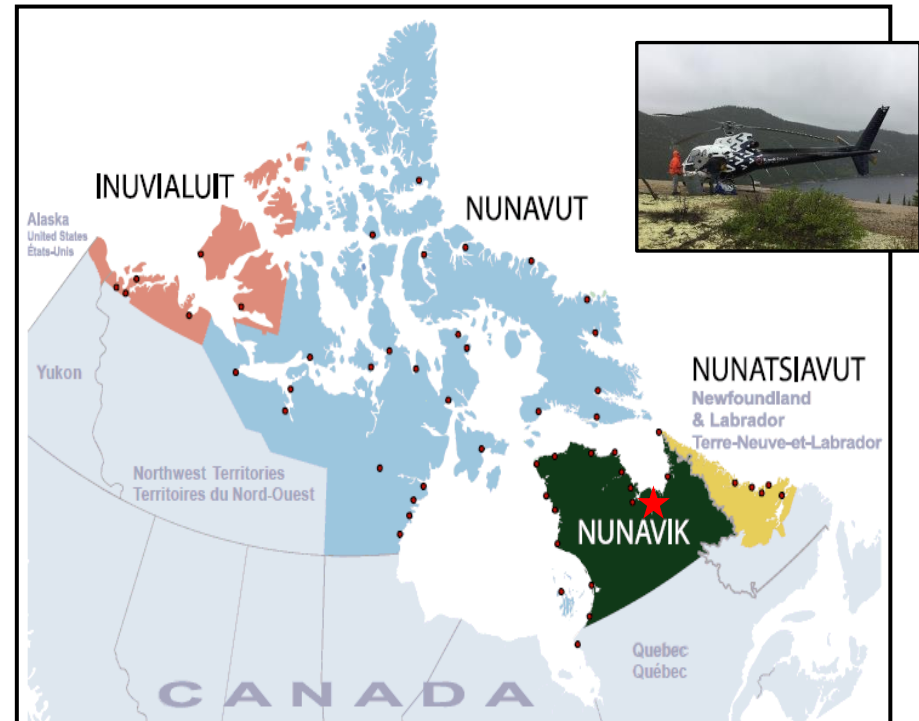
- Part of Makivik Corp.
- Created in 1978 following the signing of the JBNQA
- 9 full-time staff based in Kuujjuaq



The Nunavik Research Centre (NRC)

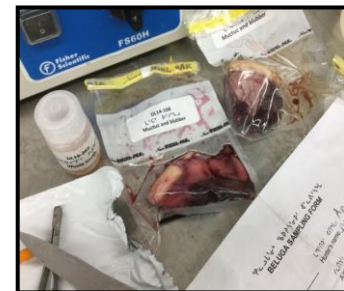
Mandate

- Conduct research that responds to the needs, questions objectives and concerns of Nunavik Inuit
- Respect and incorporate Inuit Values and Traditional Knowledge in our research
- Promote and mentor Nunavik Inuit interest and involvement in scientific research
- Promote collaboration between the NRC, universities, and all levels of government



Examples of NRC Led Initiatives

- Kuujjuarusiq Fishway Study
- Beluga Population Studies
- *Trichinella* Monitoring in Walrus
- Metal Analysis Facilities
- Wildlife Ageing
- Lead levels in Ptarmigan
- Deception Bay Arctic charr



All Projects Are Examples of:

- Long-standing Inuit-led conservation initiatives
 - Community-based monitoring
 - Community capacity-building
 - Education & Training



Deception Bay Iqaluppik Project



LP^{ab}
Société Makivik
Makivik Corporation

Forêts, Faune
et Parcs

Québec



UNIVERSITY OF
WATERLOO

Mitacs
Accelerate

Société
du Plan Nord

Québec



ᑭᐱᑭᐱᑭ ᐱᐱᑭᐱᑭ ᑭᐱᑭᐱᑭ
QAQQALIK LANDHOLDING CORP.
P.O. Box 30
SALLUIT, QUEBEC J0M 1S0
(819) 255-8908 Fax (819) 255-8864

INRS
UNIVERSITÉ DE RECHERCHE

MINE RAGLAN
UNE COMPAGNIE GLENCORE



**NSERC
CRSNG**

Photo credit: Lilian Tran

Research Question

Why are Arctic charr in Deception Bay getting skinnier year after year?

Good physical
condition; “healthy”



Poor physical
condition; “skinny”



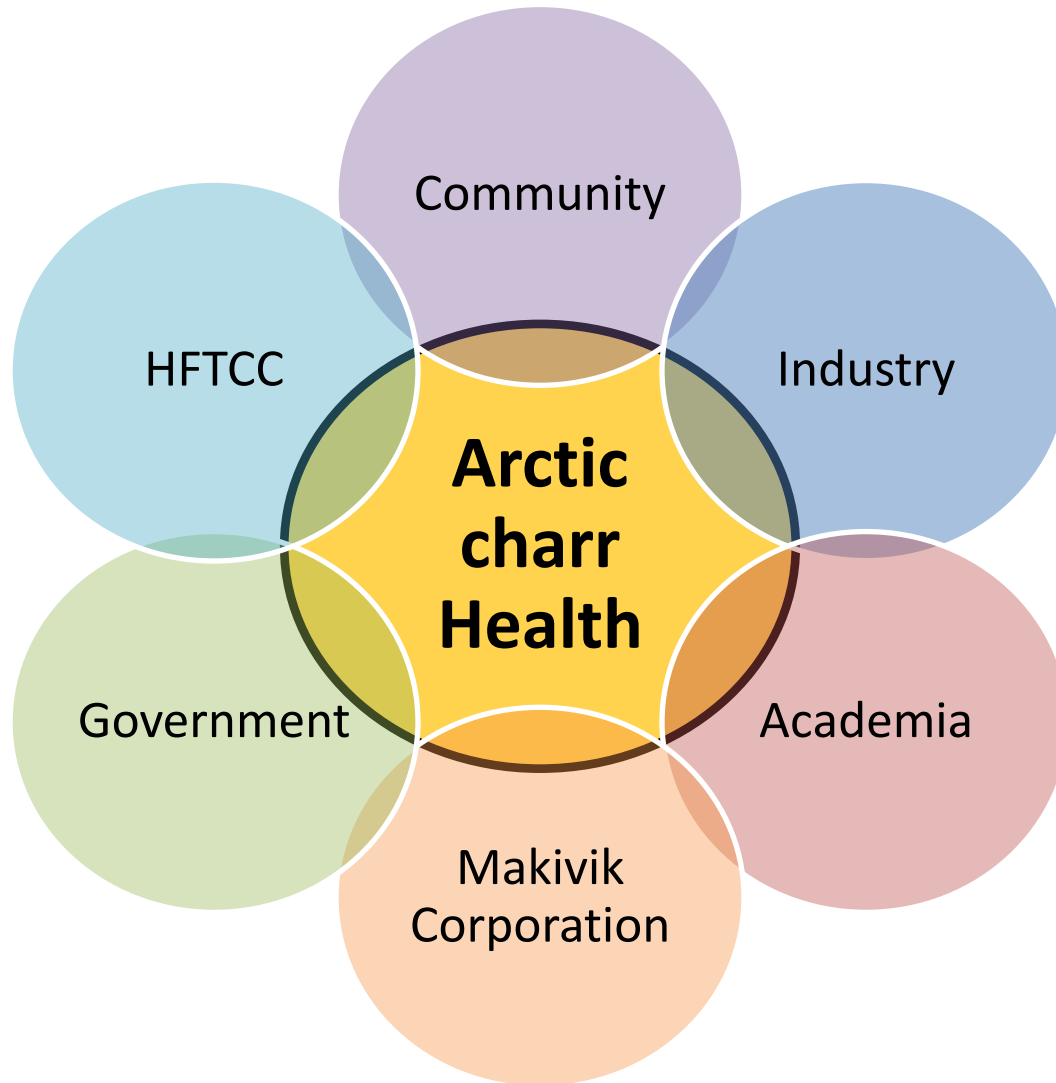
Deception Bay Iqaluk Working Group

Members

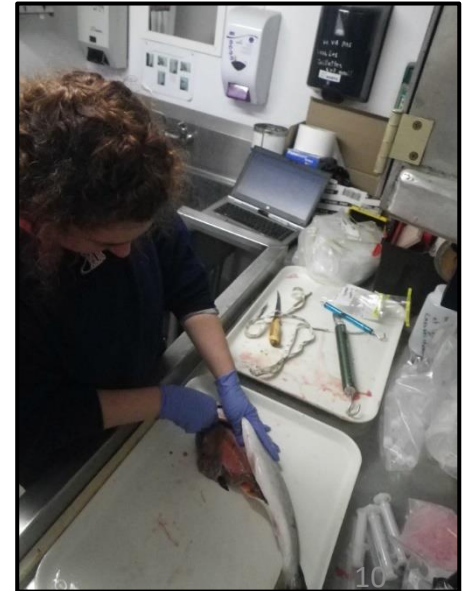
- Makivik Corporation (NRC)
- Raglan Mine
- Ministry of Flora Fauna & Parcs
- Northern Village of Salluit
- Northern Village of Kangiqsujuaq
- Hunting, Fishing, and Trapping Coordinating Committee



Multi-Stakeholder Collaboration



Summer Fieldwork



Spring Fieldwork



Raglan Environmental Forums

**** Returning results to communities ****



Research Responding to Community Needs



Nakurmiimarialuk

(thank you very much)