

Circumpolar Biodiversity Monitoring Program

CAFF



Cynthia Jacobson, Ph.D.

CAFF Chair

SAON side event, October, 2018

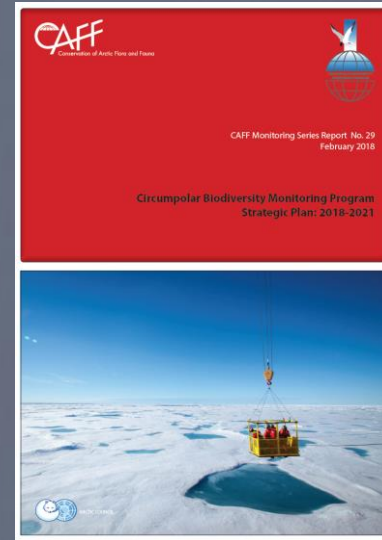


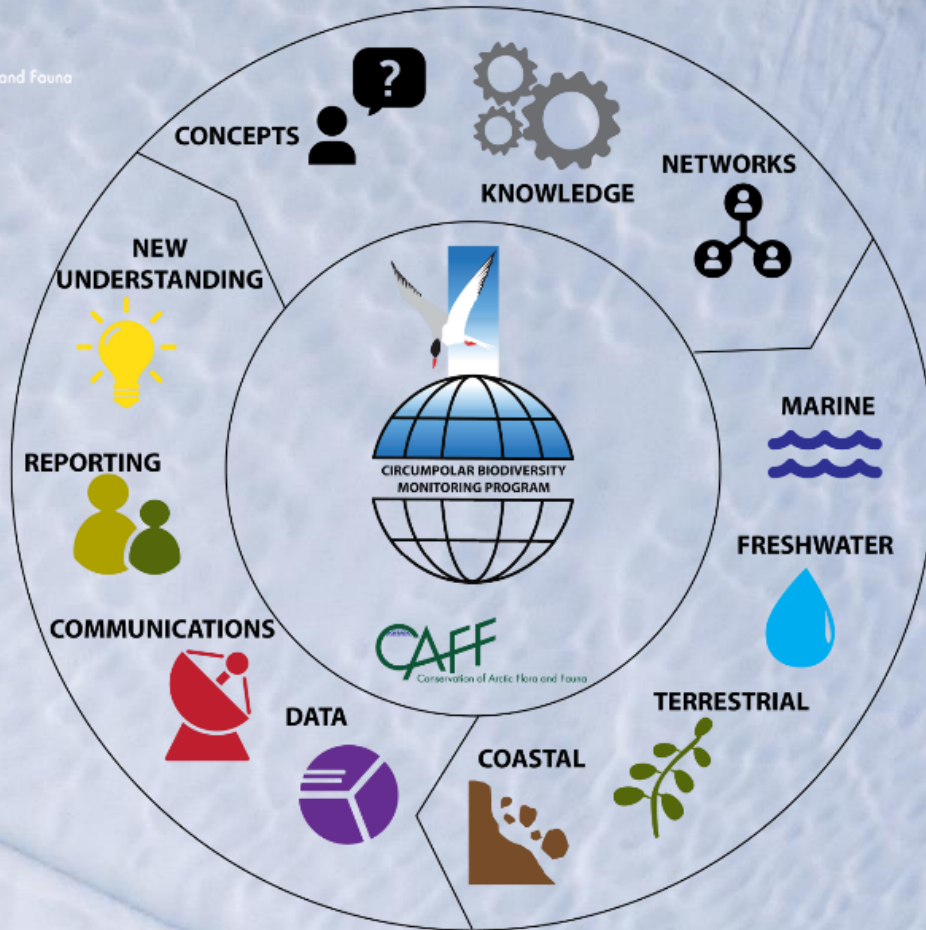
Bearded seal. Photo: Audunn Rikardsen

THE CHALLENGE

How do we **better harness** our **knowledge and capacity** to **inform** **timely** and **effective decisions** in the face of **cumulative** and **accelerating change**?

- International network improving detection, understanding and reporting of Arctic biodiversity trends
- Focal point for current and credible Arctic biodiversity information
- Bridging the information-policy gap
- www.cbmp.is





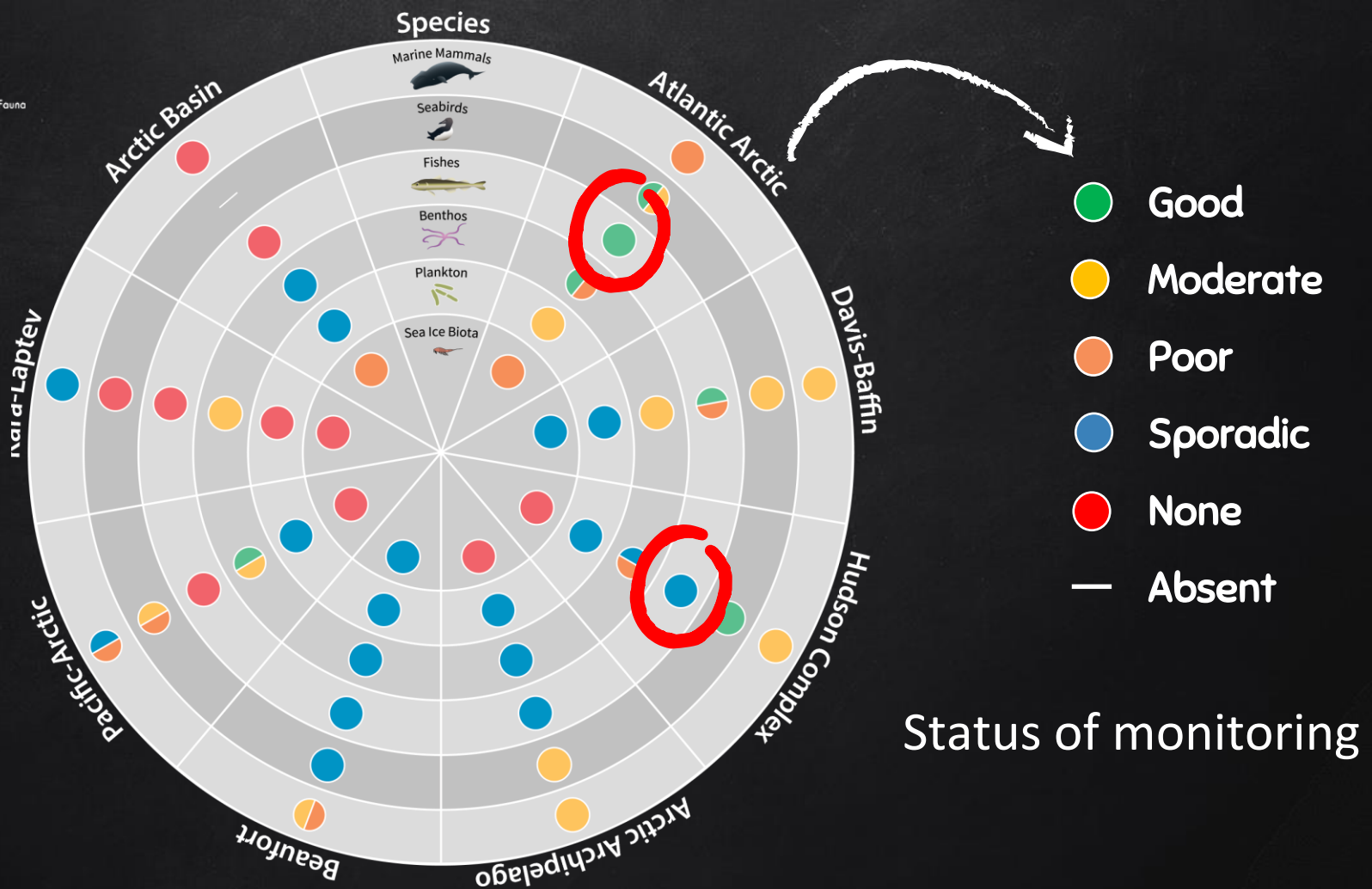
- Dynamic forward-looking analysis
- Coordinated monitoring
- Efficient data sharing
- Informed policy making

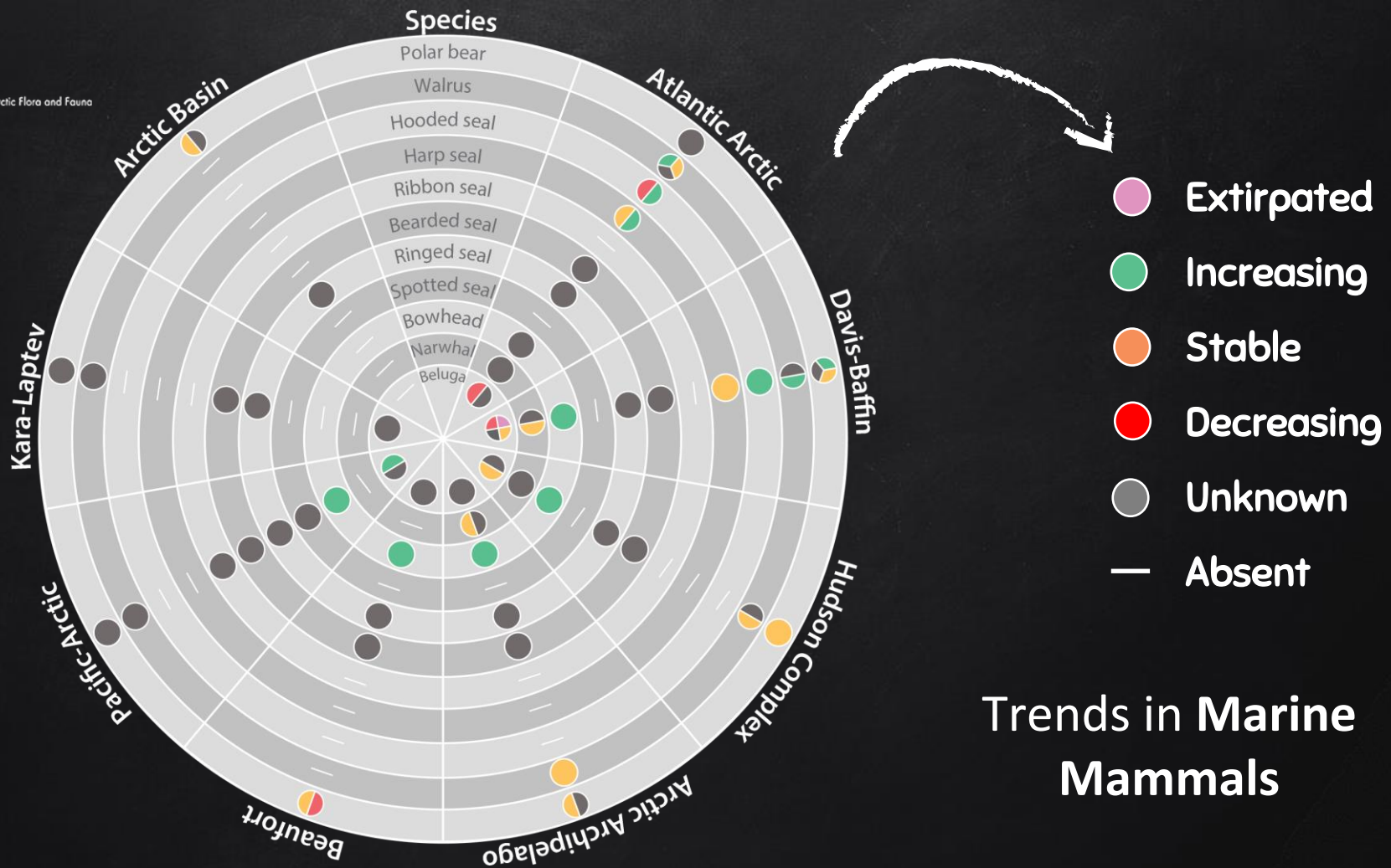


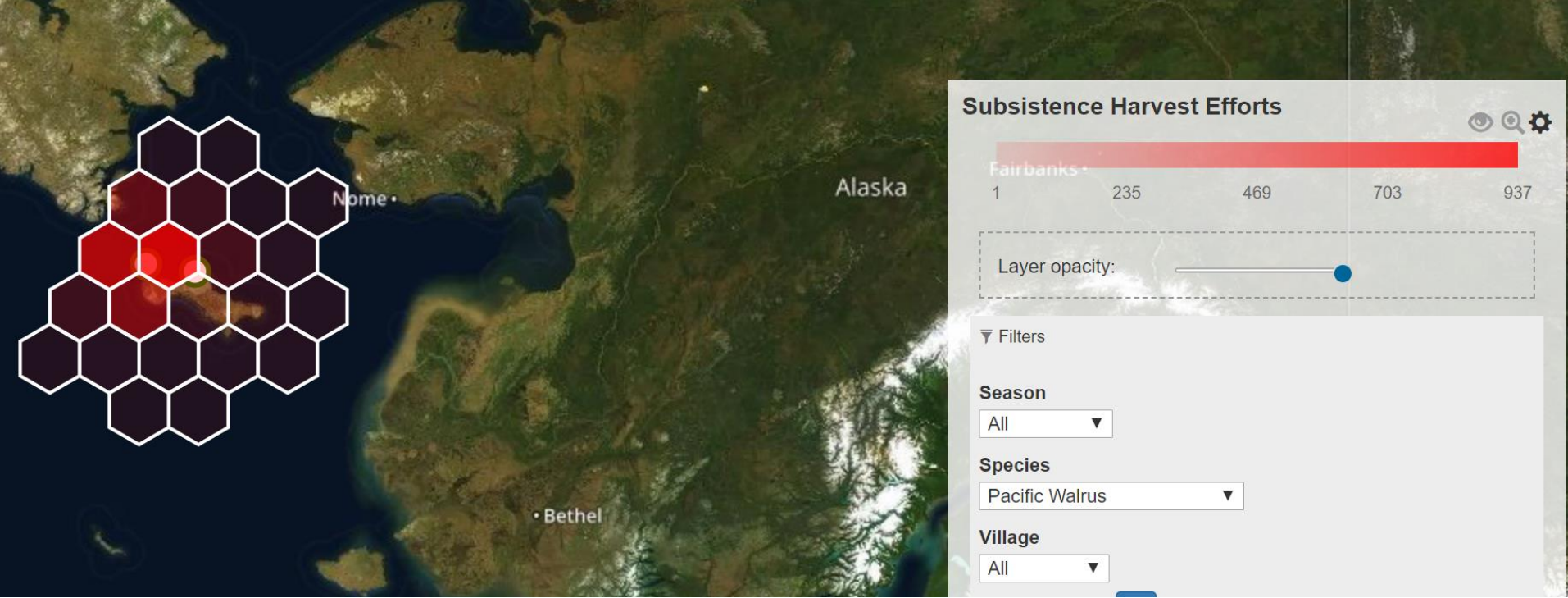
State of the Arctic Marine Biodiversity

Key Findings and Advice for Monitoring









Subsistence harvest of pacific walrus

Community-based Observing Network for Adaptation and Security (CONAS)

Captured from Alaskan Ocean Observing System

Arctic Protected Areas - 2017

Updated: a year ago

The Conservation of Arctic Flora and Fauna (CAFF) and Protection of the Arctic Marine Environments (PAME) working groups of the Arctic Council developed this indicator report. It provides an overview of the status and trends of protected areas in the Arctic. The data used represents the results of the 2016 update to the Protected Areas Database submitted by each of the Arctic Council member states (Annex 1). This report uses the International Union for the Conservation of Nature (IUCN) definition for protected areas (see Box 1) which includes a wide range of Management Categories – from strict nature reserve to protection with sustainable use. Consequently, the level of protection and governance of these areas varies throughout the circumpolar region and its countries.

Completed

Overview



Download and links



Shapefile

Download



CAFF_PA_2017

This dataset is published in the view service (WMS) available at

Add to map

Spatial extent



Arctic Biodiversity Data Service (ABDS)

www.abds.is



ARCTIC
SDI Arctic Spatial
Data Infrastructure



OBIS



GEO

BON

- Continued implementation of the CBMP
 - Intergovernmental Science–Policy Platform on Biodiversity and Ecosystem Services (IPBES) – and input to assessments
 - Arctic BON of GEOBON
 - Global Biodiversity Information Facility (GBIF)
 - UN Environment Biodiversity Indicator Partnership (BIP)
 - Arctic Spatial Data Infrastructure (SDI)
- CAFF Resolutions of Cooperation with
 - CBD, Ramsar, CMS, AEWA, EAAFP



TAKK!

You can find us at
@CAFFSecretariat
[www.facebook.com/
CAFFS](https://www.facebook.com/CAFFS)
caff@caff.is