



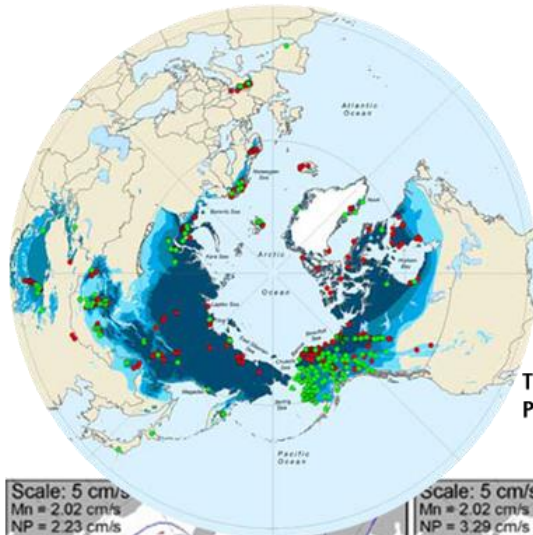
Societally Significant Observing

Meeting Needs Now for a More Resilient Future



Erica Key
National Science Foundation
Arctic Observing Network Program

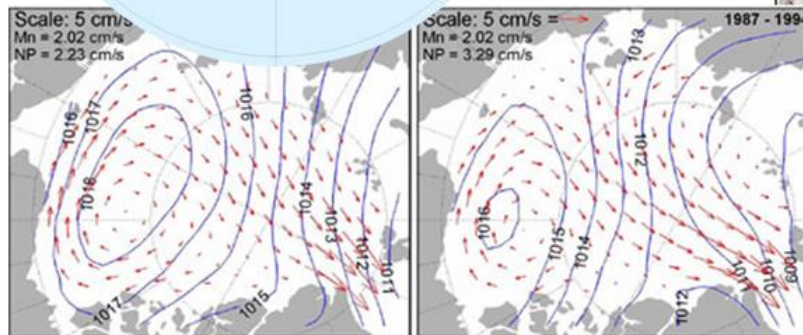
Resilience is at the nexus of need and knowing



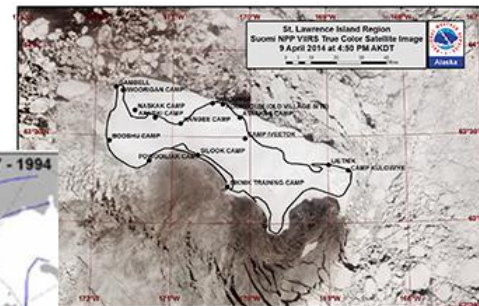
Thermal State of
Permafrost



Ideum, Vancouver Aquarium



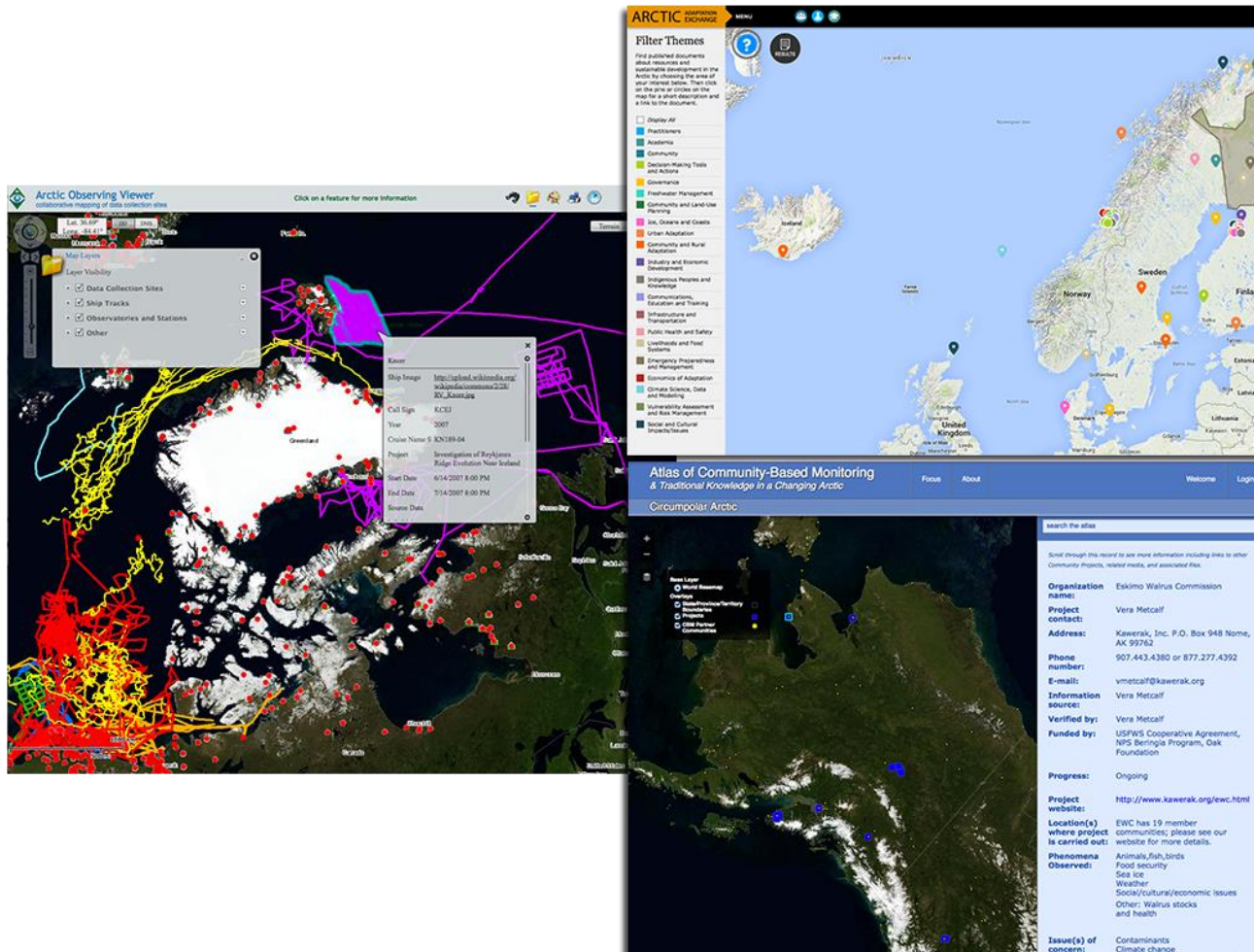
International Arctic Buoy Program



Sea Ice for
Walrus Outlook

- Information for
- > Understanding
 - > Decision-making
 - > Planning

Connecting *visually* with stakeholders in observing for awareness, collaboration, integration, and access



Building relationships between users and implementers

> a living assessment of user needs relevant to shared priorities and the observing and information science capability available to meet those needs

> focusing on 13 areas of societal significance:

- Food Security
- Freshwater Security
- Health and Well-Being
- Sustainable Economic Development
- Regulatory and Organizational Change
- Built Infrastructure
- Coastal and Riverine Vulnerability
- Environmental Safety
- Ecosystem Health
- Information Access and Security
- Environmental Awareness
- Climate Change Adaptation and Mitigation
- Teleconnections

> user need documents, resources, products, and information sources will be searchable, exportable, with visualization support

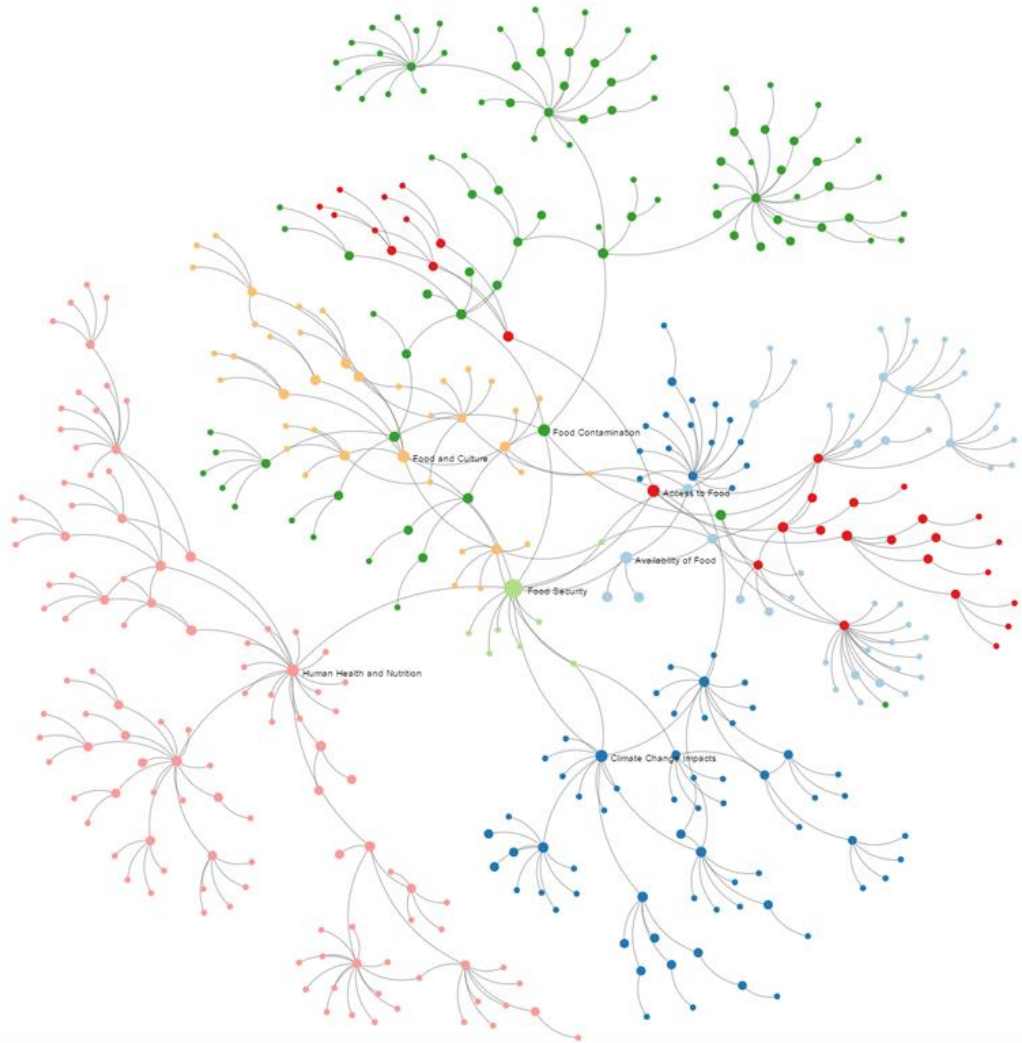
Networking the observations

An example from
Food Security

- > Key nodes
- > Supporting docs
- > Information streams

Coming soon:

- > Cross-cuts
- > Crowdsourcing





Arctic Observing Assessment

Click and drag to recenter.
Use your mouse's scroll wheel or the buttons at the bottom of the page to zoom in or out.
Click any node to view additional information.

Legend:

- Nodes represent categories or resources
- Lines between nodes represent related concepts

Search:

Search Results:
Mercury in fishes of Alaska with emphasis on subsistence species

- Mercury
- 2001-2012 Total Mercury in Alaskan Fish
- Total Mercury Concentrations in Alaskan Fish
- Mercury in the Arctic
- Technical Background Report for the Global Mercury Assessment 2013
- Mercury in Northern Pike from Koyukuk Nowitna and Innoko National Wildlife Refuges



Linking to documents and resources





Arctic Observing Assessment

Click and drag to recenter.
Use your mouse's scroll wheel or the buttons at the bottom of the page to zoom in or out.
Click any node to view additional information.

Legend:

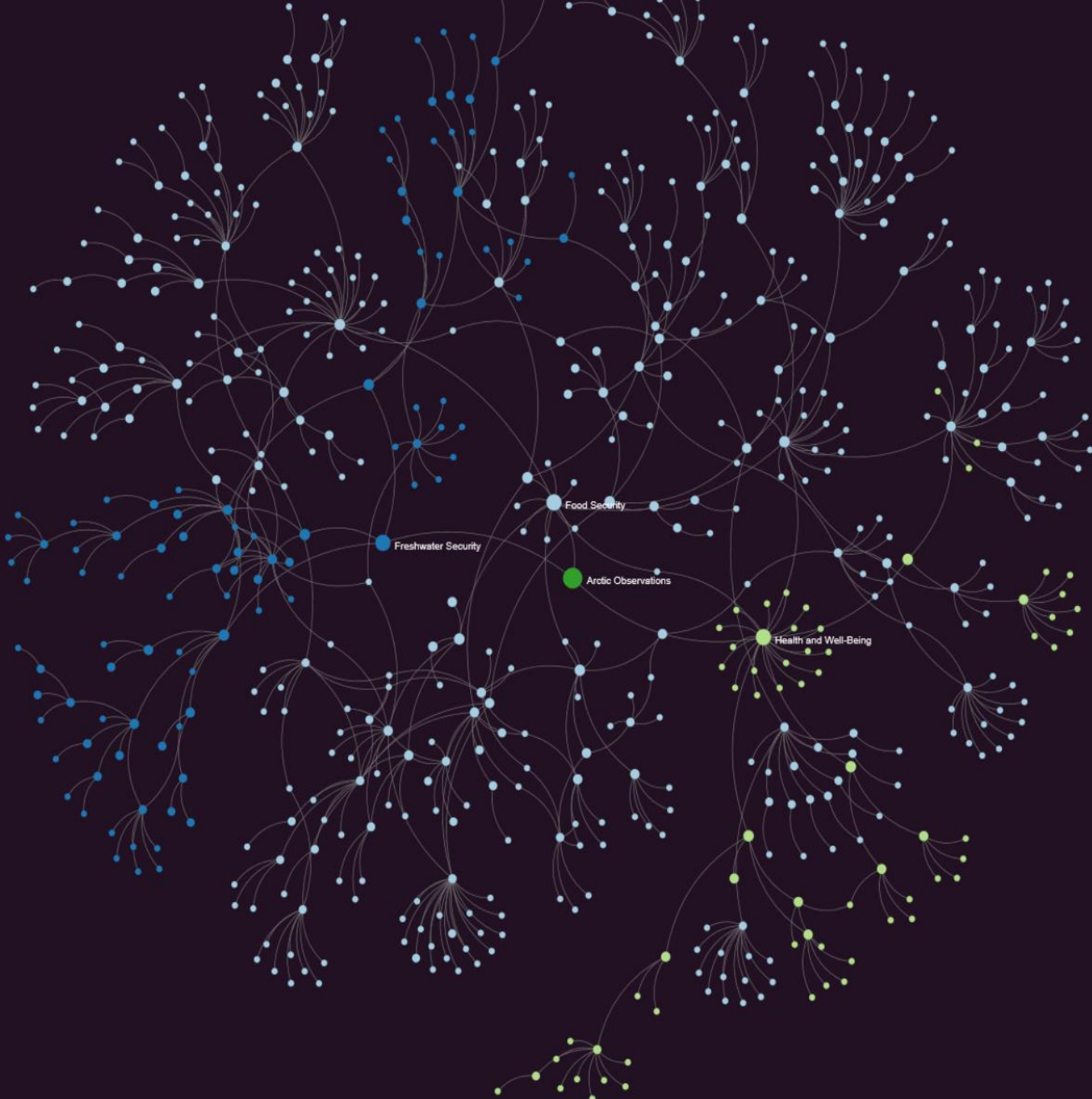
- Nodes represent categories or resources
- Lines between nodes represent related concepts

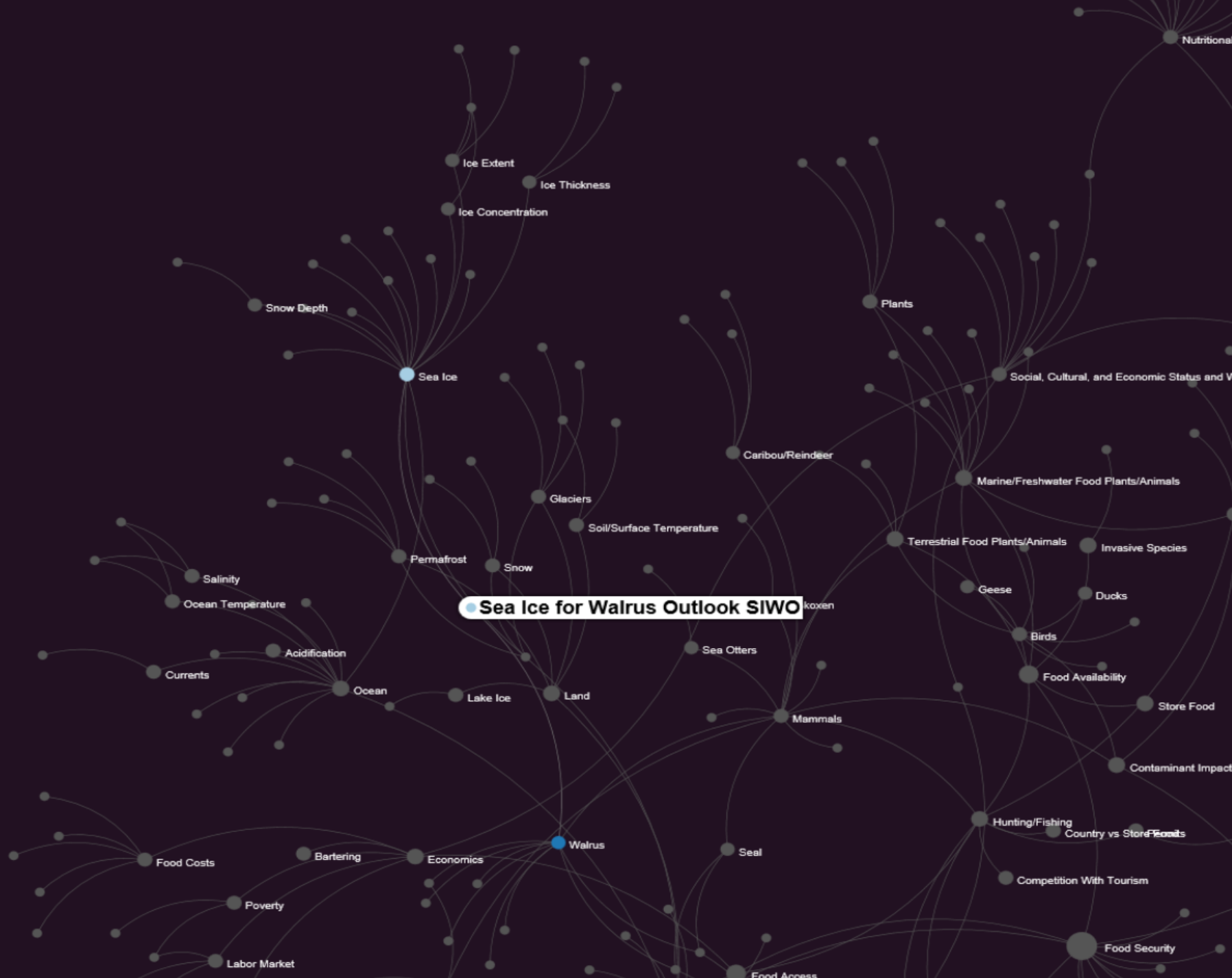
Available Datasets:

All Resources

Search:

Search by name







Become a node in the network.
Contribute your information to the AOA



<http://www.arctichub.net>